

Project Meld Update Data Access Modules

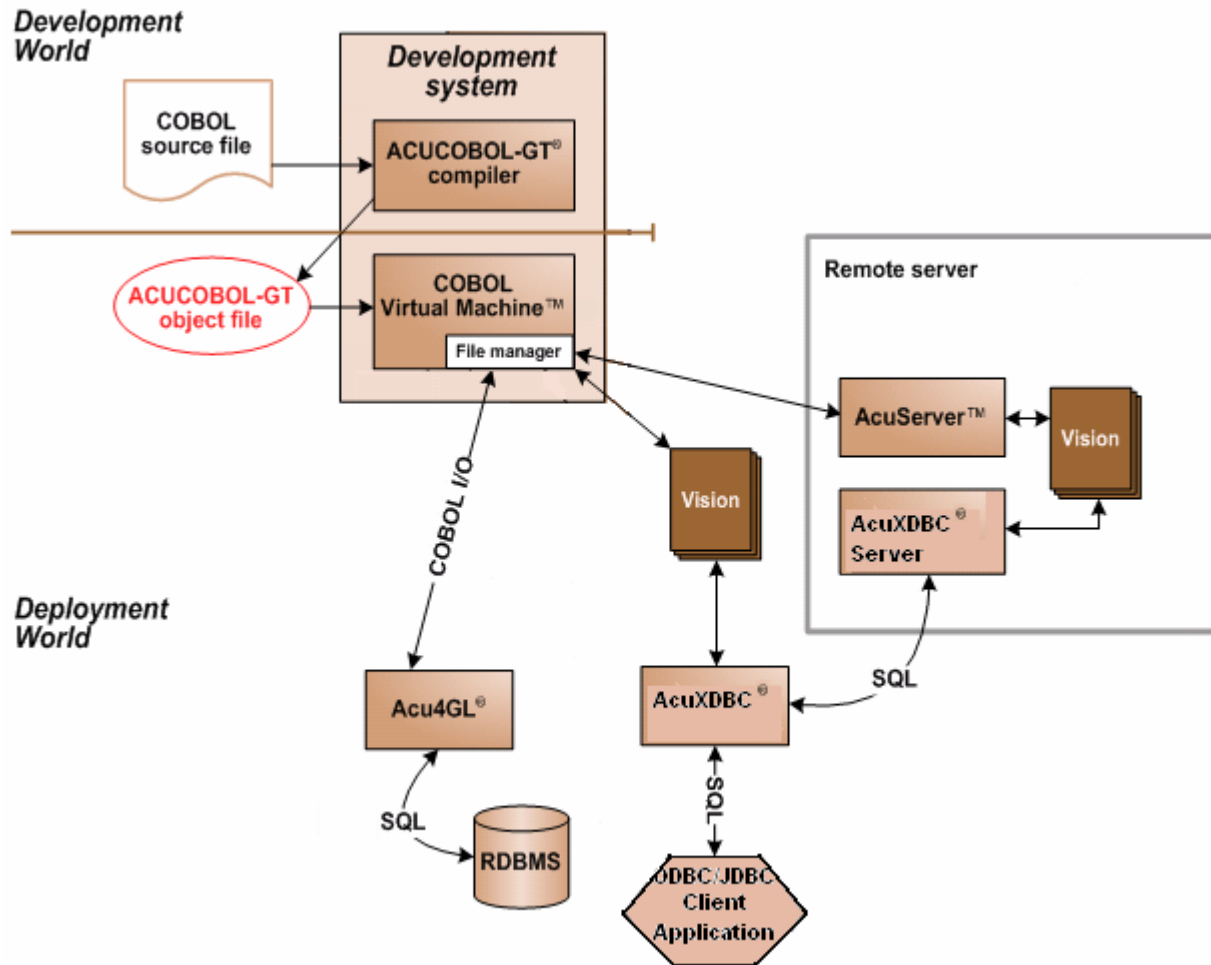
Bob Cavanagh
Director of Product Management



Agenda

- Main data access modules
- File manager
- Vision
- AcuServer®
- Acu4GL®
- AcuXDBC™
- Summary
- Next update

Main data access modules



File manager

- All of the main data access modules are accessible through the file manager, or file system interface.
- Micro Focus has an external file handling interface called EXTFH (**EXT**ernal **F**ile **H**andler).
- Creating an external file handler for Acucorp's file system interface will provide full access to all of the functionality provided by this module.
- Through this mechanism, we will add support for Vision, AcuServer, and Acu4GL to the Micro Focus technology stack.

Vision

- Having the full code base for Acucorp's file system interface, we will also be engineering support for the special extensions added by Acucorp to support the Vision file system.
- **SELECT extensions**
 - BULK-ADDITION
 - ENCRYPTION
 - MANUAL
 - MASS-UPDATE

Vision

- Configuration
 - VISION-VERSION
 - FILE-PATH
 - FILE-PREFIX... (and more)
- Data types
 - HANDLE
 - SIGNED-INT, SIGNED-LONG, SIGNED-SHORT
 - UNSIGNED-INT, UNSIGNED-LONG, UNSIGNED-SHORT
 - ACUCOBOL-GT COMPUTATIONAL data types

Vision

- **Compiler flags**
 - Ccbl -F compiler flags in support of transaction management, XFD generation, and more
 - Ccbl -D compiler flags affecting data storage
- **Library routines**
 - I\$IO
 - C\$RECOVER
 - C\$FILEINFO
 - And more...

Vision

- The Vision file utilities, **vutil** and **logutil**, will continue to work “as is”.
- No changes will be required to scripts.
- There will be no need to specially adapt any of these utilities to work with the Micro Focus technology stack, since they are specifically adapted to the Vision file system.

AcuServer

- AcuServer will continue to be supported “as is”.
- No configuration changes will be required.
- There will be no need to specially adapt AcuServer to work with the Micro Focus technology stack.

Acu4GL

- Acu4GL products will continue to be supported “as-is”.
- No configuration changes will be required for Acu4GL users.
- As Acu4GL is brought to the Micro Focus technology stack, there will be a name change, but existing configuration file variables would continue to be useable without modification, as we envision a re-mapping of existing names to new names.

AcuXDBC

- AcuXDBC, AcuXDBC Server, and AcuXDBC Enterprise Edition will continue to be supported “as-is”.
- AcuXDBC enhancements will mirror those in the ACUCOBOL-GT® file manager, ensuring continued high performance, and full support of the Vision file system.
- No configuration changes will be required for AcuXDBC users.
- As AcuXDBC is brought to the Micro Focus technology stack, there will be a name change, but existing configuration file variables would continue to be useable without modification, as we envision a re-mapping of existing names to new names.

Summary

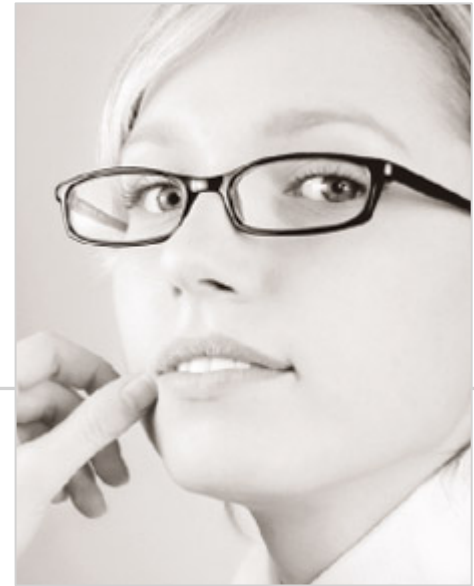
- The integration project, known as Project Meld, is engineering a solution that is aimed at providing full support for all existing Acucorp data modules.
- This support will re-use the ACUCOBOL-GT file system interface, allowing for the same access to Vision and Acu4GL databases.
- Support will include related compiler flags, configuration file variables, special ACUCOBOL-GT extensions to the COBOL language, and special data types implemented by ACUCOBOL-GT.
- Names will change, but existing Acucorp names will continue to operate, through an internal mapping mechanism.

Next update...

Graphical technology

- Look for an update on the upcoming support of Acucorp's graphical technology in the next *eUpdate*.
- Please address any suggestions, comments, or questions to Bob Cavanagh at Robert.Cavanagh@microfocus.com.

Thank you!



```
03 Label "ACUCORP" GP, line 1, column 21, size 25 font large font center, 03 bitmap graphical bitmap  
-> Load the bitmap (this just falls on a character system) call "wbitmap" using wbitmap-load, "gtanima.bmp", giving gt-bitmap * Setup a gray screen background  
title "Controls sample - tour.cbl" lines 27, size 66, background-low. * Display the screen  
03 label, title "Intro-text", font small font, line 5, column 5, size 30, lines 7. 03 label "&Entry field", line 14, column 5. 03 entry-field, using entry-  
cline + 1, column 8, size 50, lines 5, max-lines = 20, vscroll-bar,  
03 entry-field, using entry-data, line 14, column 5, size 50, lines 5, max-lines = 20, vscroll-bar,  
frame, lowered, line + 1.5, column 37, lines 3, csize 28, size 26. 03 radio-button, "Radio &1", using radio-button-data, line + 1, column 30, group-value  
03 "Intro-text", using entry-data, line + 2, column 5, size 30, lines 7. 03 label "&Entry field", using entry-data, line 14, column 5, size 50, lines 5, max-lines = 20, vscroll-bar,  
15, bitmap-timer = 10, line 1.5, column 57. 03 frame, raised, font small font line 4,
```